

M^CLEAN PROJECT FOR THE ARTS

September 15 – November 5, 2011



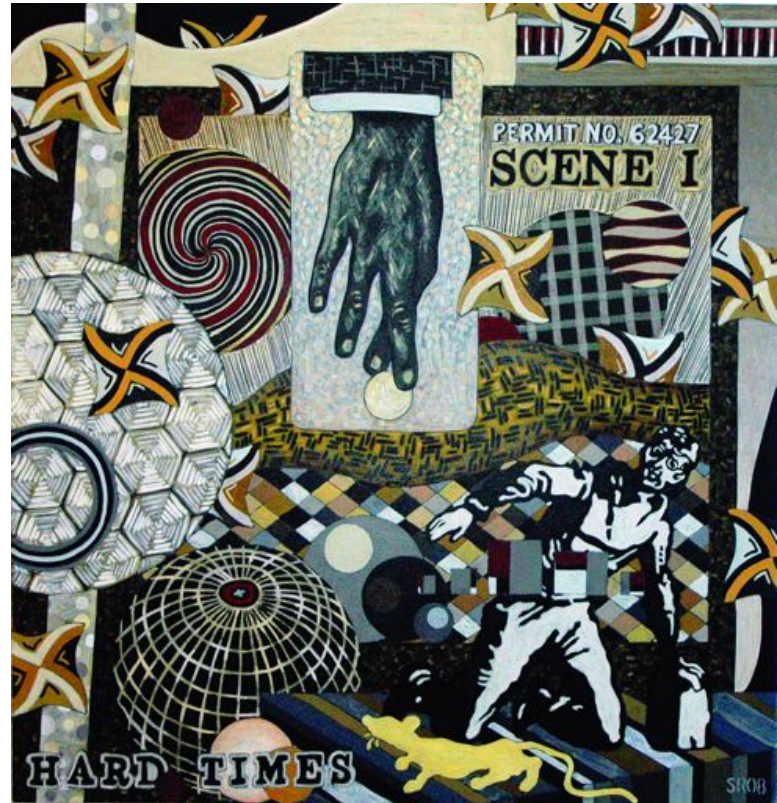
September 15 – November 5, 2011

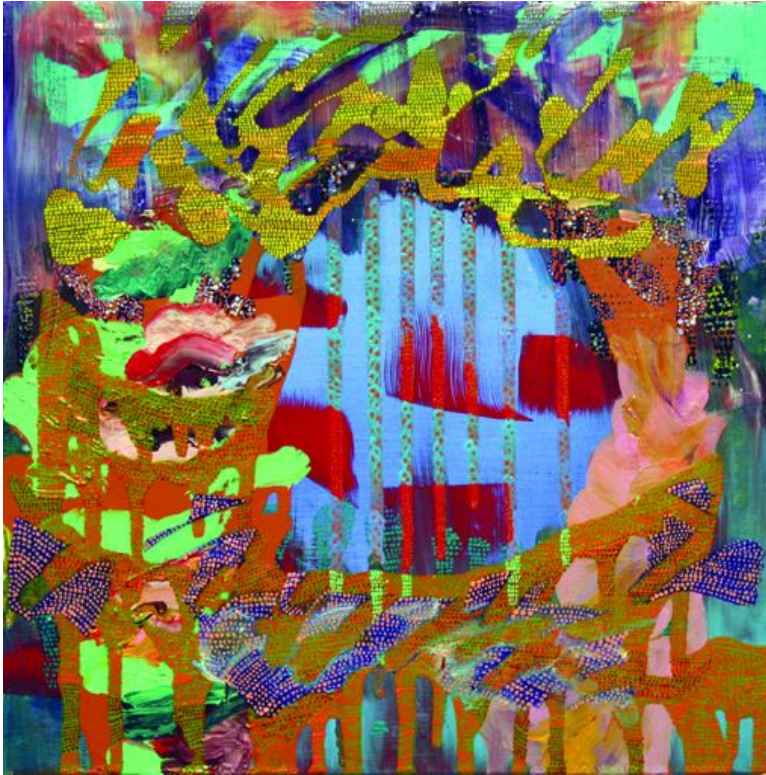
Seth Rosenberg: The Cleveland Years

Emerson Gallery

MPA is honored to host this exhibit of paintings and prints by Seth Rosenberg. Well known as both an artist and a gallerist in Washington D.C., Rosenberg moved to Cleveland, Ohio in 2005 where he produced some of the strongest work of his career. These complex, collage-like and densely colored works draw from both art history and the personal history of the artist. Geometric forms tumble dynamically throughout intense, layered compositions, forming a visual language that speaks of Rosenberg's relationships and responses to the world. This exhibit was organized by Museum of Contemporary Art Cleveland and curated by Margo Ann Crutchfield. The exhibition was generously underwritten in Cleveland by Miller Goler Faeges LLP.

Seth Rosenberg, *Hard Times*, 2008, oil on canvas, 44 x 42½ inches





September 15 – November 5, 2011

**Accidentally on Purpose:
Paintings by Carolyn Case**

Atrium Gallery

These intricately layered abstract paintings by Baltimore artist Carolyn Case inspire further study on the part of the viewer, a looking into as well as a looking at. Paint is built up layer upon layer, and the fluid nature of the medium is highlighted. As the title of the show suggests, process is prominent in these works, and although much about them seems the result of happy accident, the intention of the artist is equally apparent. As the artist aptly says, “even within the realm of chance it is difficult to escape yourself.”

Carolyn Case, *Lakota*, 2011, oil on panel, 12 x 12 inches

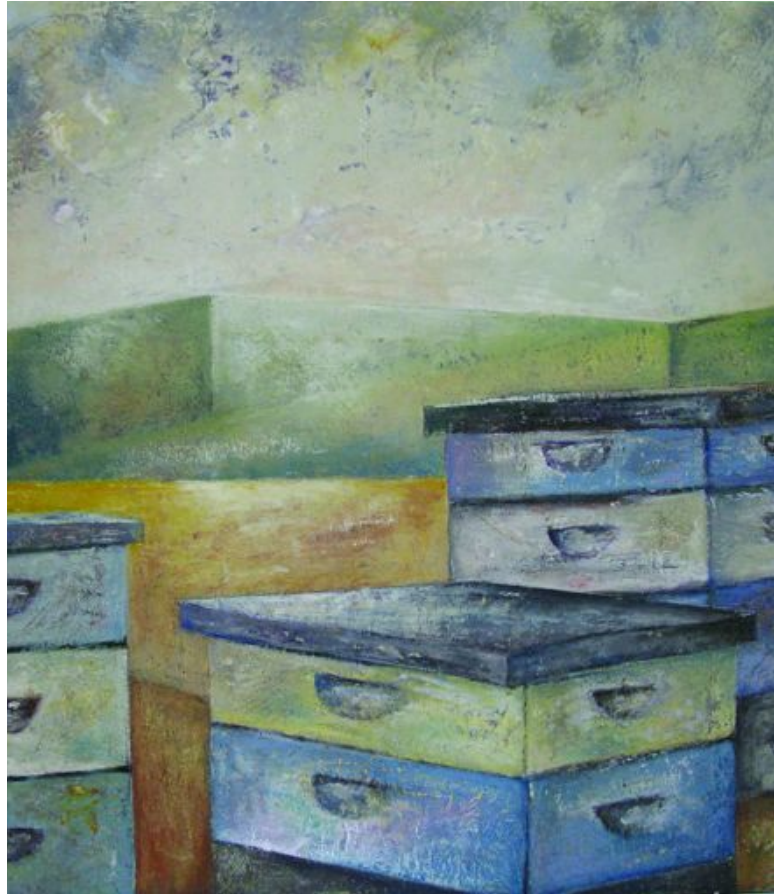
September 15 – November 5, 2011

Encaustic Paintings by Georgia Nassikas

Ramp Gallery

Working in a studio that overlooks rolling hills, gardens and woods, Virginia artist Georgia Nassikas absorbs the natural world that surrounds her. Rather than depicting the landscape in a direct or straightforward way, it is the atmosphere and the energy of the environment that finds its way onto her canvases. Whether it be the tension of gathering clouds, the rhythm of the surf or the hum of the bee hives right outside her studio, Nassikas has found a way to transfer this energy to her atmospheric studies of color, shape and place.

Georgia Nassikas, *Emerging*, 2011, encaustic on board, 48 x 42 inches





exhibitions

September 15 – November 5, 2011

Reception and Curator's Comments:
September 15, 7 – 9 pm

Panel Discussion: Moderated by
J.W. Mahoney, October 12, 7 pm

Seth Rosenberg:
The Cleveland Years

Emerson Gallery

Accidentally on Purpose:
Paintings by Carolyn Case

Atrium Gallery

Encaustic Paintings
by Georgia Nassikas

Ramp Gallery

public programs

Seth Rosenberg Panel Discussion
October 12, 7 pm

Moderated by Independent Curator J.W. Mahoney, a distinguished panel will discuss the life and work of Seth Rosenberg. Free. Call or email for reservations. 703.790.1953, nsausser@mpaart.org

(e)merge Art Fair
September 22 – 25

McLean Project for the Arts will be participating at (e)merge art fair at the Capital Skyline Hotel September 22 – 25. Stop by our room to see works by artists with upcoming MPA exhibitions. www.emergeartfair.com for more info about this exciting event.

MPAartfest
Sunday, October 2, 10:30 – 4:30 pm

A one day juried fine art and craft show and sale featuring the work of approximately 40 local and regional visual artists in McLean Central Park (rain location McLean Community Center). FREE

Family Art Workshop
Saturday, October 22, 10 – 11:30 am

Fantasy Landscapes
Using silver, black, white, gray and gold paint and collage elements, we will cut and paint layers of shapes and patterns, creating our own fantasy landscapes. We will view the paintings of Seth Rosenberg for inspiration. \$10 per family. Register at www.mpaart.org.

Cover image: Seth Rosenberg, *Cuyahoga Cache*, 2007, oil on canvas, 39" x 55 inches.

MPA's Mission

The mission of McLean Project for the Arts is to exhibit the work of emerging and established artists from the mid-Atlantic region; to promote public awareness and understanding of the concepts of contemporary art; and to offer instruction and education in the visual arts.

MPA's Benefactors and Partners

MPA, a 501(c)(3) organization, presents the visual arts program for the community at the McLean Community Center in a public/private partnership with the McLean Community Center and Fairfax County. We are a Partner with the Virginia Museum of Fine Arts and the Corcoran College of Art + Design. MPA's exhibitions and educational programs are funded by many corporate and community sponsors, individuals and foundations. Please visit www.mpaart.org for a list of MPA's supporters.

MPA is funded in part by the National Endowment for the Arts, the Virginia Commission for the Arts, and Fairfax County in cooperation with the Arts Council of Fairfax County.



VIRGINIA
COMMISSION
for the





MCLEAN PROJECT FOR THE ARTS
1234 INGLESIDE AVENUE, MCLEAN, VIRGINIA 22101
IN RESIDENCE AT THE MCLEAN COMMUNITY CENTER
PHONE: 703.790.1953 WWW.MPAART.ORG

Gallery Hours Tuesday through Friday:
10 am – 4 pm, Saturday: 1 pm – 5 pm

McLean's Only Outdoor Arts Festival!



Location: McLean Central Park

Date: Sunday, October 3

Time: 10:30 am – 4:30 pm

Admission is Free!

MPAartfest
connecting art and community

If you would like to be removed from our mailing list,
please send your request to info@mpaart.org